

**Request for Qualifications for Solar issued Town of Marshfield, MA
August 1, 2012**

Acknowledgements: Paul Halkiotis, Town Planner, Paul Tomkavage, DPW Engineer, Rocco Longo, Town Administrator and Tom Reynolds, DPW Superintendent

Background:

Mark Dakers, Acting Director of the Department of Environmental Protection and Seth Pickering, Regional Director for the Green Communities made several presentations and provided valuable guidance to the Energy Committee about developing solar arrays on capped landfills.

The Mass DEP has issued 22 post closure use permits allowing for the development of solar photovoltaic arrays. Also, the Southeast Region currently has five Post-Closure Use permits pending for installation of solar photovoltaic arrays, Dennis landfill, Mashpee landfill, Dartmouth landfill, Ravenbrook landfill in Carver and the Rockland landfill.

Scituate leased its landfill to a developer and the array is expected to generate about \$300,000 for the town. Easton anticipates generating about 1.6 (MW) megawatts of electricity and \$250,000 per year. (Boston Globe) The Mass DEP estimates that every four (4) acres of solar array will generate approximately one (1) MW of electricity.

RFQ Features:

A Request for Qualifications (RFQ) allows the Town to evaluate multiple options, ownership structures and determine the solar array project and financial arrangement that best meets the Town's interest.

It is expected that the selected respondent will adhere to the most recent net metering legislation and regulations and pursue tax credits and incentives, rebates, and other benefits that are available and/or may become available in the future.

The respondent's proposal shall include a plan for the disposition and/or assignment of: (a) any environmental or other attributes (such as RECs, SRECs, greenhouse gas offsets, or forward capacity market payments) that are generated in connection with the operation of the Systems; (b) any tax credits or incentives generated in connection with the operation of the Systems; and (c) any grants or rebates obtained in connection with the installation of the Systems (such as from Commonwealth Solar).

The bidder's proposal shall include a plan to collect energy data at the facilities to assist the Town in evaluating the performance of the solar PV system(s).

Anticipated Schedule:

Pre-Submission Conference with the Town	August 9, 2012
Questions Due to the Town	August 14, 2012
Responses to Questions/Addenda Issued by the Town	August 21, 2012
Qualifications Due to the Town	September 12, 2012 3:00 PM

Public Opening of Qualifications
Interviews and Selection
Anticipated Selection of Most Qualified Respondent

September 14, 2012 1:00 pm
Week of September 17, 2012
Week of October 4, 2012

Descriptions of the Sites:

1. Clay Pit Road capped landfill site:

The capped landfill and transfer station and buildings at Clay Pit Road are sited on 56.9 acres. The parcel lot is H11-04-14 on the town assessor's maps. Approximately 27 acres of the landfill was capped in 2002. It is capped with a high density polyethylene, 40 mil, with an 18 inch covering of sand and a 6 inch layer of topsoil.

2. Wheeler Pit site:

The Wheeler Pit site is located on Forest Street on approximately sixty-five (65) acres of a former gravel pit. The Wheeler Pit drinking water wellhead (zone 1) is located in the eastern part of the location with a 400 foot radius around the wellhead. The zone 1 area should **not** be considered for a solar array. The remainder of the site is a zone 2 area and should be considered for a solar array. Martinson Elementary School and the Marshfield HS are located on the opposite side of Forest Street. There are no deed restrictions on the site and the DEP Drinking Water Program has stated that solar farms are allowed on zone 2 sites and no specific permit is required from the state.

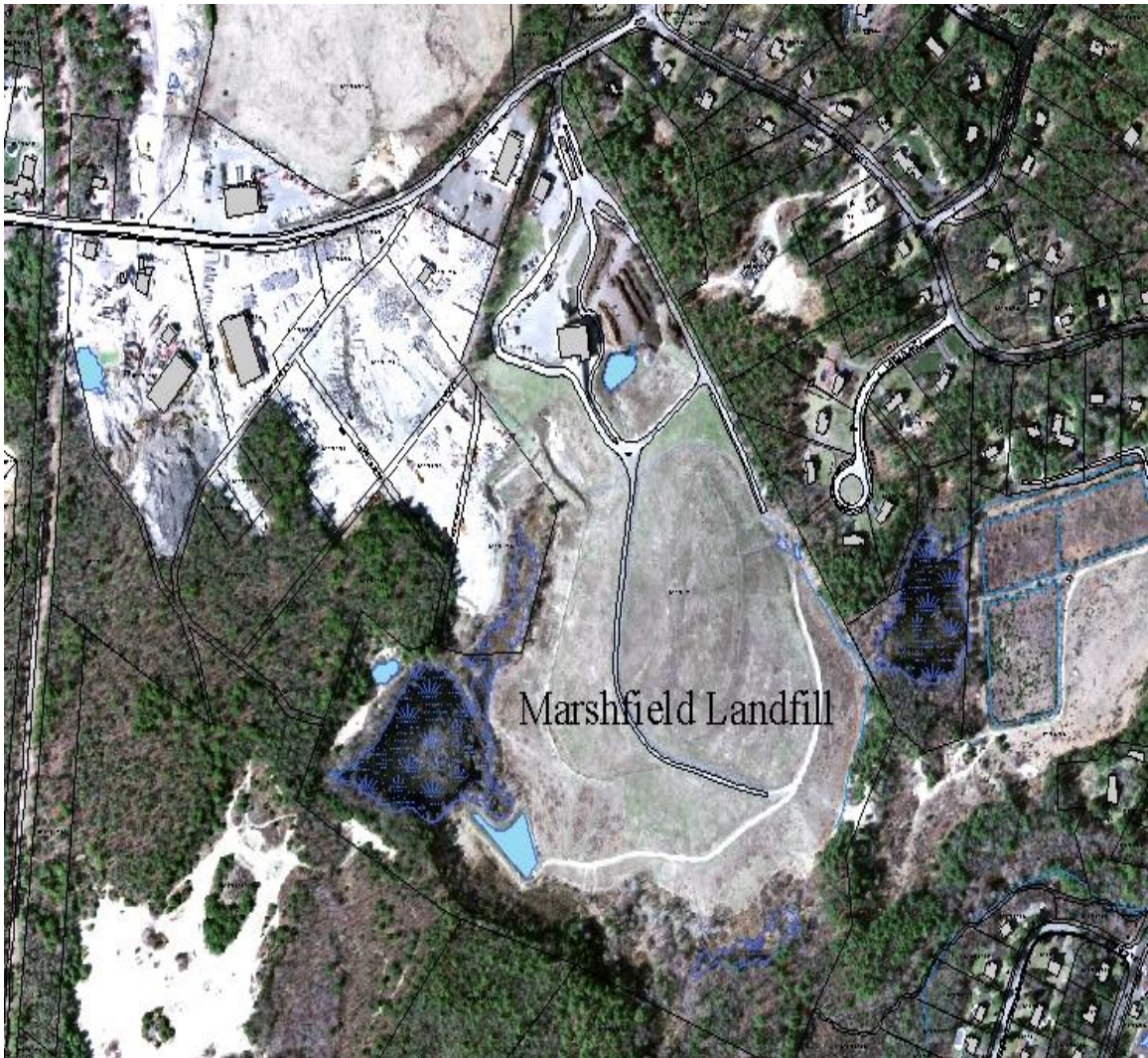
Landfill Photo #1



Landfill Photo #2



Landfill Aerial View



Wheeler Pit Photo #1



Wheeler Pit Photo #2



Wheeler Pit Wellhead - Photo #4



Wheeler Pit Aerial View

